



72 Kennedy Terrace Paddington QLD

3 1 1

This delightful cottage is positioned in the residential heart of Paddington, just a few minutes walk from Latrobe Terrace with lifestyle highlights including cafes, bars, galleries and boutiques.

Property features include:

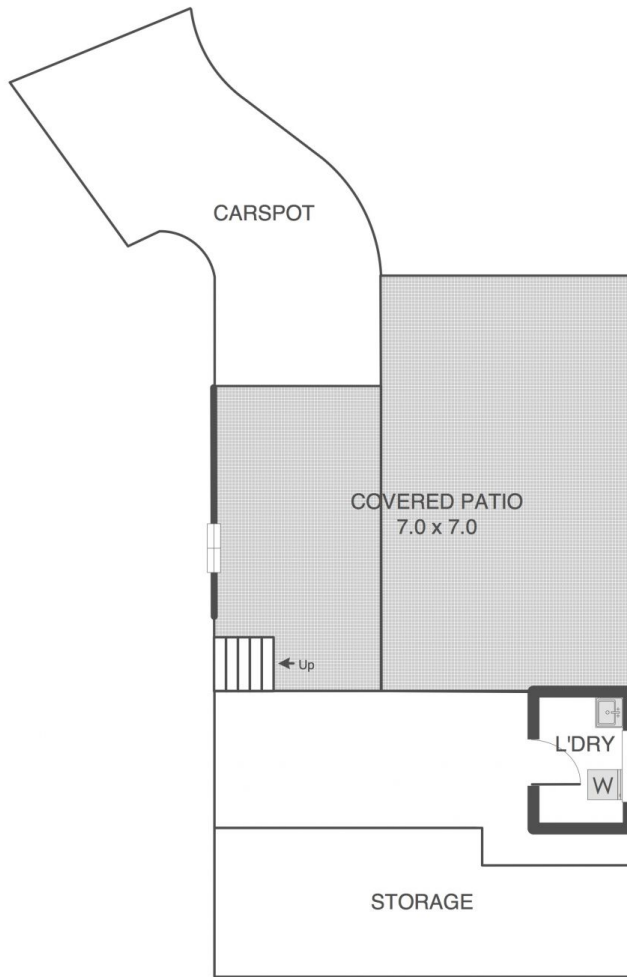
- * Open plan modern Kitchen/Living area with air conditioning
- * Three large bedrooms - all with air conditioning & wardrobes!
- * Polished timber flooring throughout
- * Front and rear decks, perfect for entertaining
- * Modern bathroom
- * Laundry and extra storage under the house
- * Off-street parking area (access via Donaldson St)
- * Low maintenance gardens

View : <https://www.burlingtonproperty.com.au/lease/qld/city-north/paddington/residential/house/7908448>

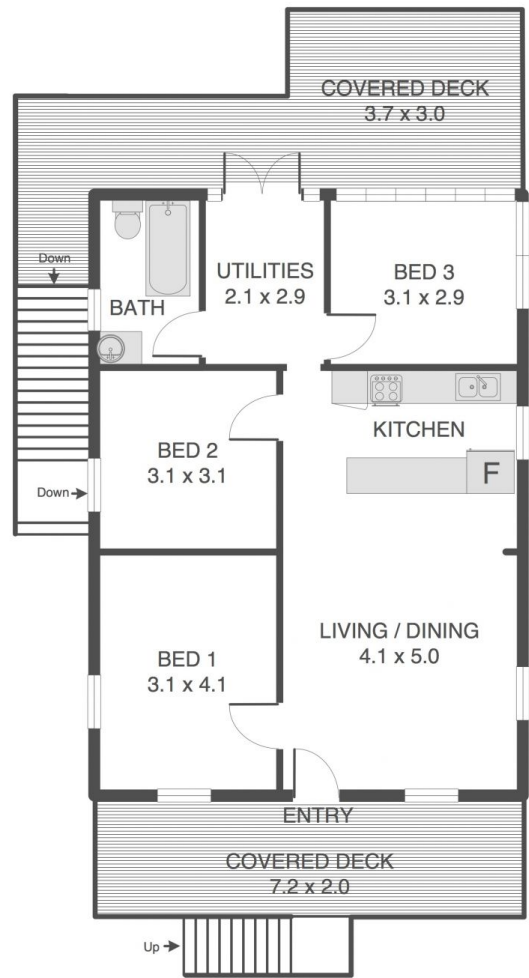


Ila Horosak
07 3510 8222

LOWER LEVEL



UPPER LEVEL



72 KENNEDY TERRACE, PADDINGTON

APPROX INTERNAL FLOOR AREA 72 sq m*

APPROX FLOOR AREA INCLUDING EXTERNAL AREAS SHOWN AND CAR PARK 205 sq m*

*This figure indicates approximate usable space and may not include area of walls and therefore may differ from building or council plans.

While every attempt is made to ensure accuracy please note that these plans are only designed to give an approximate indication of layout. All dimensions, scales, angles, location or orientation of doors, walls, windows or any other items is approximate. These plans are for representation purposes only and should not be relied upon for any purpose. No responsibility is taken for any error or mis-statement within this plan.

